

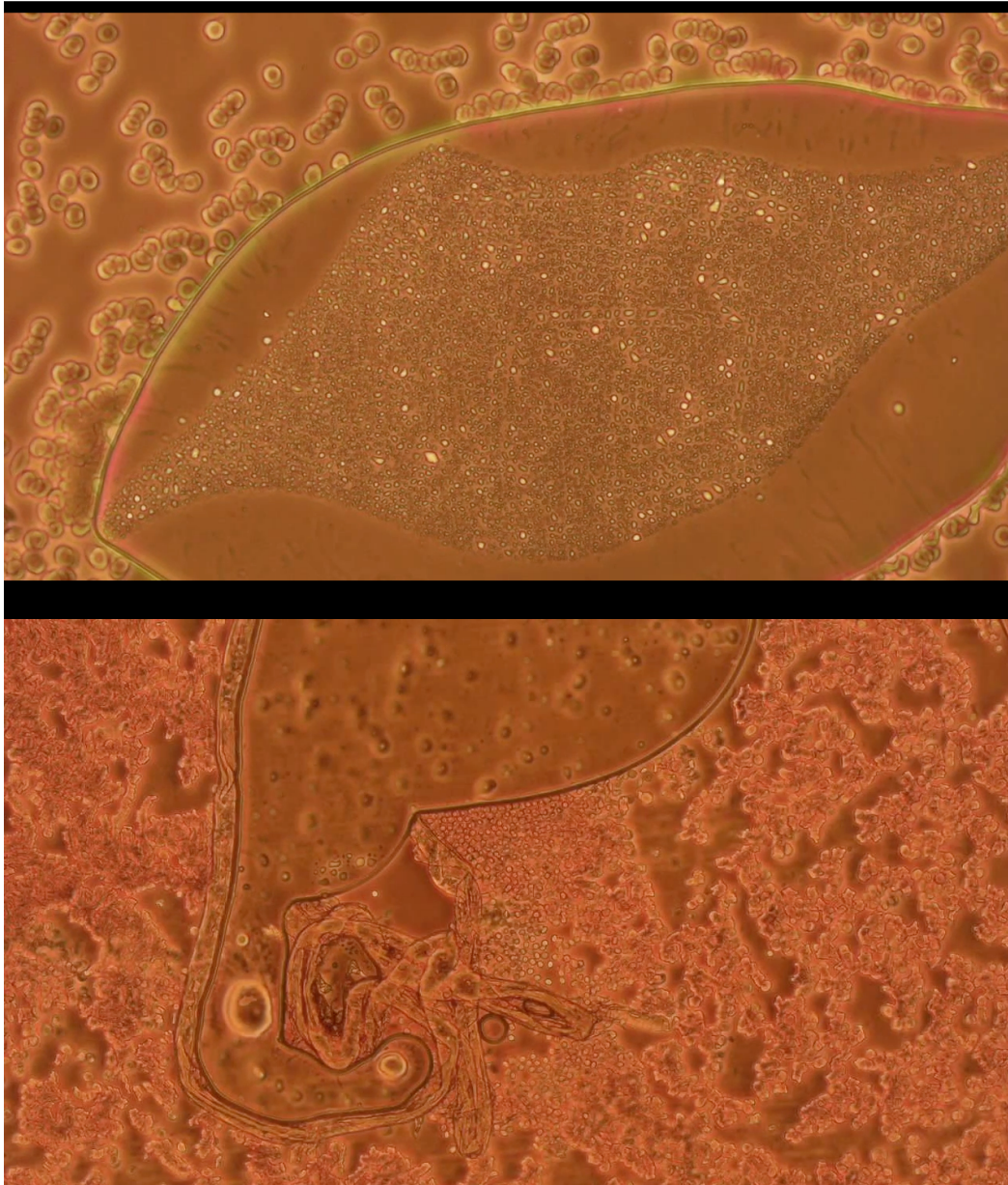


Unnatural Blood Parasites

This image is a hydra-gel parasite from a 3x vaccinated individual with paramagnetic forehead and upper arms.

The videos below document what appears to be mature parasites predatory feeding cycle. The parasites pierces and then consumes red blood cells in a process observably similar to [hydra parasite](#), [phylum Cnidaria](#), using a [nematocyst](#). In a distinct phase, the parasites manufacture unnatural artifacts, as ribbons, tubes or dark structures.

Forms of this parasite were been observed in **all** test subjects. Vaccinated subjects show a large, up to 15% blood volume, as these parasites while unvaccinated subjects have 1.5% or less.



Ribbon Artifact Synthesis

Other time-lapse videos show these artifacts create unnatural ribbon and black particles. The image at left shows a ribbon wrapping the artifact. The ribbon is very long and extends quite far to the right outside the frame.

Other researchers have likewise documented similar artifacts describing them as graphene nano-tubes responsive to 5G and other radio signals.

These artifacts are observably associated with humans exhibiting unnatural paramagnetic and magnetic effects.

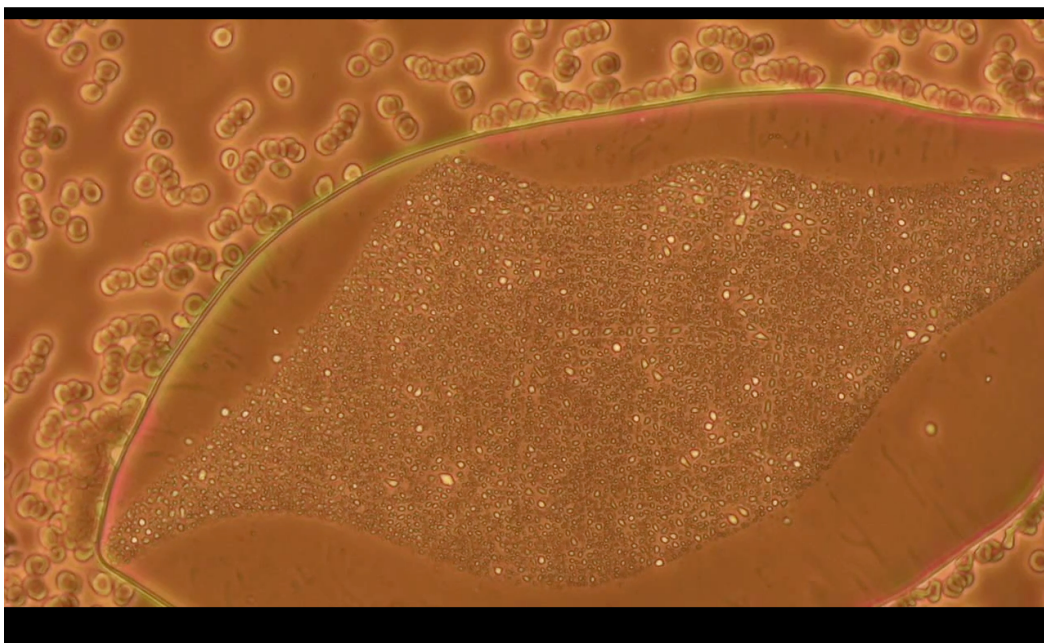
Nano Tech

Note how the particles in the artifact self arrange in to rows and columns. This is unnatural. These parasites mature into creation-sites for credibly documented ribbon, tube and particulate artifacts that are likely graphene based.

These observations support the bizarre notion that these artifacts may, in fact, relate to people that have [bluetooth MAC addresses](#).

Related Prime Articles:

- [The Green Pill](#) - My 2020 search to figure out WTF
- [Bluetooth Test Protocol](#)
- [Welcome to Lock Step](#) - The WEF agenda rolls out
- [Immunopathology from the COVID Vaccine](#) - Early stage observations that something is wrong
- [Vaccine Mechanism of Injury](#) - The mechanism of multigenerational public lobotomization

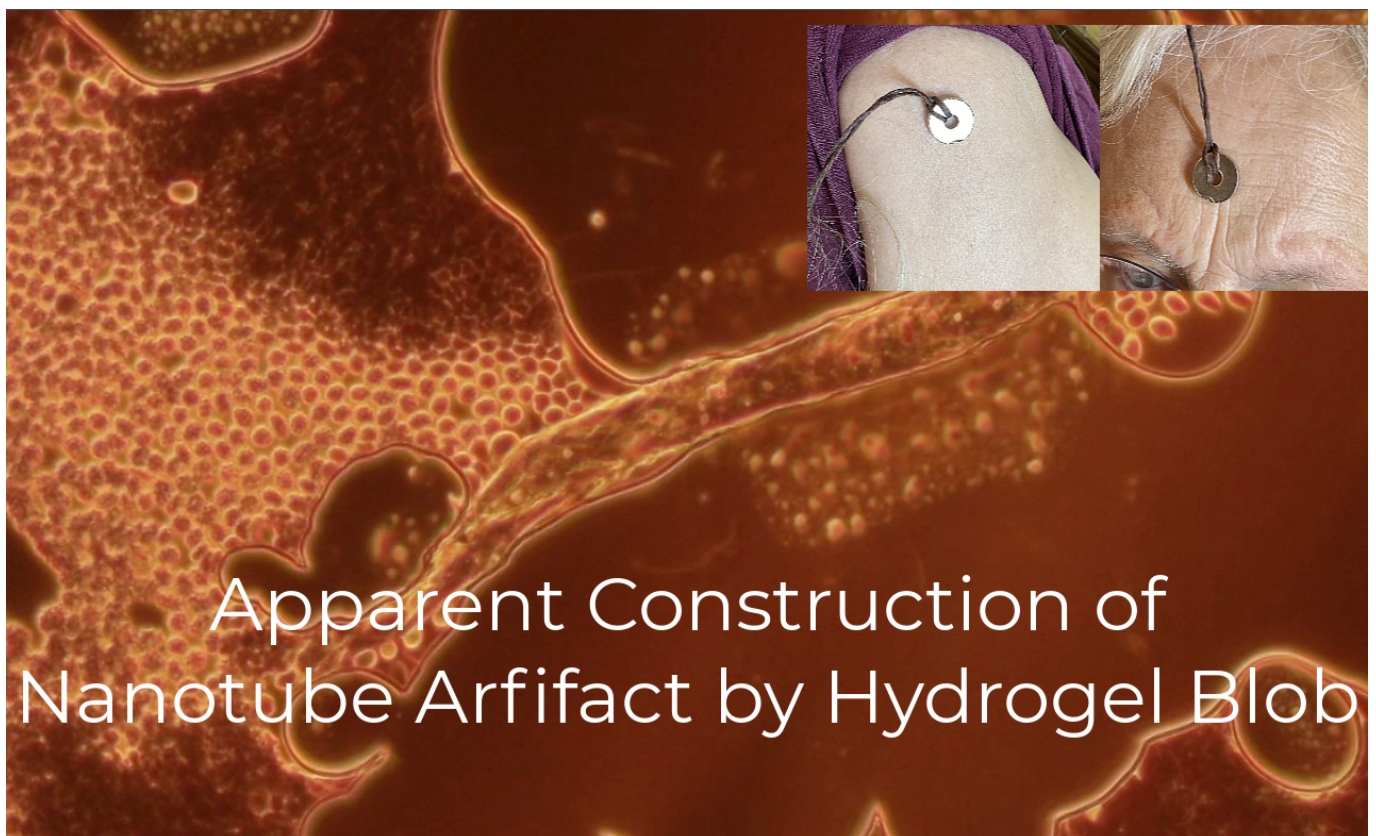


Nanotube Constructors

These artifacts appear to manufacture nanotube artifacts. This subject exhibited paramagnetism on both shoulders and forehead suggesting biologically adverse accumulation of [graphene oxide, a paramagnetic substance, in tissues](#).

Paramagnetic particles absorb and conduct Radio Frequency (RF) Radiation and into blood causing perpetual hematological injury. Tri-layer [graphene nanotubes are superconductors](#) and likely absorb likely unprecedented amounts of RF energy causing devastating hematologic injury.

This image shows rd blood cells left, construction of a nanotube artifact, center, surrounded by parasite cytoplasm, above and below tube artifact, with a magnet sticking to the forehead and arm of the 3x vaccinated subject.



Video of Parasite and Red Blood Cells

This video shows the parasite consuming Red Blood Cells and growing in a multi stage process during which:

1. Generates a cationic, positive, charge electro-statically gather Red Blood Cells into a mass;
2. Pierces adjacent red blood cells (2 events recorded) with a stab-event that destroys the hemoglobin surface of the RBC;
3. The parasite absorbs remains of red blood cells adjacent to the artifact;
4. The parasite grows.

Unvaccinated Are Infected

These artifacts are apparent in vaccinated and unvaccinated samples. The video above is an unvaccinated 23 YO female. All samples tested to date in vaccinated and unvaccinated individuals show hydra-parasites. Presence of these artifacts suggest an infection has been intentionally deployed to the population via multiple vectors, and are not limited to COVID vaccines.

- [Aerosol - sprayed from airplanes as chem-trails;](#)
- In so-called COVID-19 Vaccines and by shedding from recipients;
- Food - as feed additives like in [magnetic meat](#) or COVID vaccinated animals;
- [Injectable Medicines](#) and [dental anesthetics](#)
- And possibly municipal water [Illegal lab apparently back-pumping contamination into Fresno City water supply](#). The city [official cover-up](#).

Consistency of nematocyst feeding mechanism observed in all participants evidences the organism:

- Was engineered;
- Was deployed as widely as possible
- anti-parasitic protocol strongly advised.

Vaccinated

- Most vaccinated subjects exhibit magnetism on arms;
- Vaccinated have a large percentage 10-20% artifacts are blood plasma

volume;

- Vaccinated individuals usually exhibit deteriorating health;
- Some vaccinated individuals broadcast radio signals including bluetooth.

Unvaccinated

- Unvaccinated have a small parasite volume percentage .1% to 1.5%;
- No serious health issues in unvaccinated subjects;
- One subject exhibits magnetic areas on forehead, chest, abdomen and cervical spine;
- One health challenged unvaccinated subject exhibited general paramagnetism on forehead;
- Everyone appears infected.

This is personal now...

I am a member of the unvaccinated test group. I have not had a COVID test, or so-called vaccine. [I have eliminated the blood parasites](#), but still have multiple magnetic spots. See video.

My children and my neighbors have been observably affected in spite of a very carefully crafted off-grid, remote lifestyle where we augment our on-site farm food with organic products.

In other words - if we were hit - I'd bet everybody was.

LiveO2 use seems to remediate accumulation of Graphene Oxide artifacts in the blood and appears to reduce presence of the parasites.

It helps to eliminate them when used with anti-parasitic agents.

What are the Parasites Making?

This video shows hydra-parasites actively build other artifacts. The purpose of these artifacts is unknown and unnatural. This is the same vaccinated subject as above showing construction of a different type of artifact.

Universal presence of these artifacts in samples evidences malevolent deployment of destructive technology.

This video shows live construction of a dark artifact inside a hydra-gel artifact. The construction of non-living artifacts evidences the existence of undisclosed purpose. One artifact manufacturing another is beyond strange.

This confirms Dr Ana Mihalcha's observations that these objects are the source blood contaminants.

This video shows live construction of a long ribbon artifact surrounded by traumatized red blood cells in rouleau formation.

This confirms Dr Ana Mihalcha's observations that these objects are the source blood contaminants.

The interview with Dr Mihalcha starts at about 16:00.

[Here is the direct link to the video on Rumble if you have problems playing it here.](#)

Brain Radio Emissions

Don't stop watching until you observe the radio frequency emissions from the back of the skull showing this Pfizer-vaccinated persons brain has been hacked to emit radio frequency signals. This video was produced by <https://www.laquintacolumna.net/>

This video correlates skin magnetism, anomalous skin surface voltage and radio emissions from the back of the head.

Hydra weaponized to install nano-tech?

The [defense and pharmaceutical industries have over 100,000 patents that match search term hydra-gel.](#)

The term medical application are equally describes bioweapons and deceptively described beneficial drug delivery. These patents are generally model inventions that mimic one or more unique characteristics of aquatic [hydra organism](#).

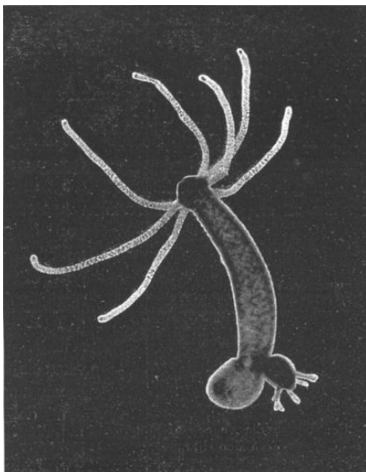
- Each fraction regenerates a whole
- Parasitic feeding with nematocyst

- Immortal
- Easily engineered.

This protocol models the artifacts observed all subjects as a [chimeric](#) blood parasite based on the hydra organism.

The videos above show hydra-parasite-like use a nematocyst feeding mechanism to consume the host red blood cells and repurpose the materials into unnatural, and likely malevolent purposes.

As a result the entire population has been targeted and apparently infected with a bioweapon. ***We have a big problem.***



[Hydra Transgenic Facility - Keil Germany](#) manufactures hydra for bioengineered applications

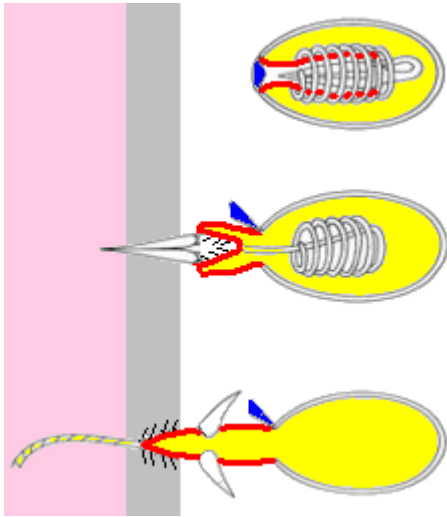
Hydra-Feeding Mechanism

[The hydra has a three stage feeding mechanism:](#)

1. Sense prey by motion;
2. Eject the lance to stab or puncture the target;
3. Sense glutathione concentration to trigger feeding response;
4. Insert a tubule to suck the juices out of the prey.

This video illustrates the native-hydra lance and consume feeding mechanism. Please note how this matches the puncture and consume behavior the hydra-gel

artifacts for all subjects, where red blood cells are the prey instead of brine shrimp.



Nematocyst Feeding Mechanism. 1) Lance the prey and 2) use a feeding tube to consume.

Products and Equipment

Product Name	Approximate Cost	Purpose
Magnetic Test Necklace	\$10 - shop.liveo2.com	Test biological samples including meat for contaminants that cause magnetic attributes.
Fenbendazole Anti-parasitic	\$66 - Amazon	Anti-parasitic to disable feeding mechanism
Chlorine Dioxide	40\$ - Amazon	Catalytic agent to breakdown graphene artifacts and anti-parasitic
LiveO2 Extreme	~7K - shop.liveo2.com	Maximum hypoxia to flush spleen and distribute anti-parasitic and detox agents as deep as possible into tissue
Ionic Foot Bath	\$110-\$500	Removes strongly charged particles from the body into water. Repeated use reduces paramagnetism (magnet sticking).

Day Plan

The nematocyst feeding mechanism is vulnerable to anti-parasitic compounds. Phase-1 of the protocol uses anti-parasitic substances to disable the nematocyst feeding mechanism.

Phase 1 - Observations in Unvaccinated Subjects

- Within 2-3 days, the blood parasite population noticeably decreased, and observable parasites are devolved appearing smaller and unable to manufacture artifacts.
- By day 7 in parasites are no longer observable under the microscope.

Notes

Phase 1 appears to have halted progression of nanotechnology by depriving parasites of raw materials required for manufacture. After day 5-6 observable parasites devolved so no graphene or nano-tube like structures were apparent.

Hypoxic training blood turbulence inhibits parasite evasion by three apparent mechanisms:

1. Dislodging tissue embedded parasites
2. Maximizing tissue dispersion of anti-parasitic agents;
3. Releasing the spleen-blood reserve neutralizing the habitat.

Observation based on these observations:

1. LiveO2 workouts increased the observable blood parasites from about day 2-6. Vascular turbulence from hypoxic workouts flushed parasites from tissue to blood. Prolonged hypoxic training appears to release the spleen blood reserve to improve parasitic decimation.
2. Very aggressive ultra-hypoxic training caused a large amount of observable parasites about day 3;
3. No parasites were observable after day 7 regardless of aggressive ultra-hypoxic training;
4. Dramatic, at least 80%, reduction in Graphene artifacts in all subjects, vaccinated and unvaccinated after a LiveO2 workout observed in all subjects.

Chemicals like chlorine dioxide which may “kill-off” organisms may overwhelm detoxification capacity in severely infected persons. Vaccinated individuals exhibit 10-20% of blood volume may be parasites. Killing these too quickly could release a harmful amount waste products.

Vaccinated individuals should pause anti-parasitic agents, fenbendazole, as if they feel detoxification is excessive. To date no vaccinated have reported excessive detox.

Phase 1: Disable Hydra Parasite Feeding - 7 days

Component	Amount	Purpose
Fenbendazole 220mg	1 capsule 220 mg	Undermine development of feeding tubes for hydra derived organisms. Inhibits physiology of feeding tubes.
EDTA Cream	about 1 tsp applied to skin	Absorb metal toxins and hydra-parasite breakdown waste
Stop Reabsorb capsules	4-6 capsules	Binder for waste products exiting liver to prevent reabsorb
LiveO2 Hypoxic Training	Effort to capacity	Expedite detoxification Flush hydra-parasites out of tissue Distribute anti-parasitic & detox agents to tissue
Ionic Foot Detox	30-60 Min	Ion exchange decontamination. Watch water for how much material comes out.

Do not use glutathione until hydra parasites growth is arrested with anti-parasitic agents.

- 220 mg [Fenbendazole](#) to destabilize of hydra feeding tubes.
- LiveO2 Workout - to capacity. - Flush organisms protected by obstructed gel flow. Maximize whole-body blood flow to maximize distribution of anti-parasitic agent(s) into tissues and flush gel-protected organisms from tissue
- Topical or suppository EDTA to chelate nano-particulates. EDTA is referenced in the [patents](#) as a neutralizing agent. IV EDTA / Vitamin C reportedly knocks down the population for about 1 month.
- Oral charcoal to inhibit waste reabsorption from bile
- **NO GLUTATHIONE BECAUSE IT STIMULATES PARASITES TO FEED**

- **Use this protocol for 1 week before adding glutathione**

Phase 2: Destroy Graphene Oxide Infrastructure

Depending on the duration of infection the adverse effects of the work-products of these parasites is unknown. The magnet test can be used to determine graphene oxide artifact accumulation.

1. Continue Phase 1 for ongoing remediation of hydra-parasites from shedding, aerosols and other sources;
2. Chlorine Dioxide to degrade Graphene Oxide components previously generated;
3. Glutathione as topical or suppository to aid detoxification and bolster antioxidant capacity;
4. Continue until magnetism is fully resolved plus 3 months.

Component	Amount	Purpose
Fenbendazole 220mg	1 capsule 220 mg	Undermine development of feeding tubes for hydra derived organisms. Inhibits physiology of feeding tubes.
EDTA Cream	about 1 tsp applied to skin	Absorb metal toxins and hydra-parasite breakdown waste
Stop Reabsorb capsules	4-6 capsules	Binder for waste products exiting liver to prevent reabsorb
Chlorine Dioxide Drops	2-10 drops/day to tolerance	Expedite breakdown of toxins and products vulnerable to oxidation.
LiveO2 Hypoxic Training	Effort to capacity	Expedite detoxification Flush hydra-parasites out of tissue Distribute anti-parasitic & detox agents to tissue
Ionic Foot Detox	30-90 min	Watch water for how much material comes out. Continue at least until magnets do not stick.

Phase 2 Duration

- Until all signs of magnetism have been removed or until ionic foot-bath is clear;
- And until environmental dosing stops.

Phase 3: Recurring Knockdown

Repeat Phase 1 for 1 week per month or when Blood or Microscope test shows parasites are present.

Repeat Phase 2 on a positive magnet or RF test.

Environmental exposure is conducted by multiple means. The only hope is to remove the source of the parasites, which means removing the forces that developed and continue to deploy the parasites. Research herein indicates that Graphene oxide will degrade via natural mechanisms over time, but not during continuous global deployment

Evidence Testing

Verification of hydra gel artifacts is possible by multiple methods. No lab is required for the blood draw method.

Microscope Method

This method is discussed first because it shows the nature of the weaponized parasite.

1. Draw blood on slide;
2. Search for puddle artifacts
 1. Homogenous interior particulate about 1/10 - 1/20 the size of a red blood cell
 2. Surrounded by a mass of agglutinated red blood cells
 3. Red Blood Cells adjacent to the mass will appear clear, having lost the red-hemoglobin membrane.
3. Time Lapse Confirmation:
 1. Fix on a candidate artifact
 2. Record 30-60 minutes of video
 3. Look for spike-events around the fringe
 4. Look for increase of artifact size
 5. Look for possible formation of other artifacts inside the candidate.

Magnet Method

A majority of affected individuals are magnetic. Paramagnetism has been widely observed with some cases showing magnetism. Normal tissue is a [weak diamagnetic which repels magnetic material](#).

Neodymium magnets adhere to deltoid muscles because the hydra-parasites produce magnetic end products, presumably made of graphene oxide or graphene with manganese. Magnetism should decrease as the graphene by products are eliminated from the system over phase 2.

Drag a necklace magnet over the body searching for magnetic areas. Note strength and location of magnetic attraction. A decrease in either strength or magnetic area indicates breakdown in (para)magnetic toxins.

The gall bladder area, below the right breast, tends to be most magnetic, likely because toxic graphene accumulates and dwells in the gall bladder during the detoxification process.

Blood Draw Method - aka Mihalcea Method

The blood draw method cultures the hydra-parasite for a period of 4 hours.

A standing container at room temperature creates an incubator where hydra-parasites have unrestricted access to a captive food supply. The videos above show a process where the clear cytoplasm of the parasite will expand, leaving a residue of pierced red blood cell husks and escaped red blood cells that settle to the bottom.

An electron donor like EDTA or heparin donates electrons and neutralizes the parasite. This is why parasites evade detection in normal blood tests.

The end result will be a two-part mixture of parasitic-plastic organism(s), and a precipitate composed of partially clotted red blood cells mixed with the husks of parasitized RBCs. The husks will likely be darker than normal blood because they will be crumpled wrappers of red blood cells.

Steps

1. Draw blood into a non-EDTA non-heparin treated container;

2. Let stand at room temperature for 4 hours;
3. Inspect the container for plastic-like plug and unnaturally degraded blood at bottom and a plastic artifact on top.
 1. The plastic mass will be an parasite that when parasite has unrestricted access to feed;
 2. Degraded blood on bottom will be pierced hemoglobin shells with clotted blood it will be black and granular due to red blood cell husks mixed with clotted blood.

[See Dr Ana Mihalcea Article.](#)

In a normal sample after 4 hours there should be some sedimentation, but the blood should have fluid on top, not a plastic plug. Any clot should break up easily. If you observe a plasticized rubber-like plug the test is positive. Hydra-gels are alive and well and glutathione administration may accelerate hydra-gel propagation.

RF Bug Detector Method

Individuals infiltrated with sufficiently developed nanotechnology emit radio frequency signals.

These weak signals become detectable when the individual is in a quiet electromagnetic environment like a [Faraday Cage](#).

Method is to go into the quietest RF area and scan the body for RF signals. Any area of the body emitting a signal is active and likely has a sufficient concentration of contaminants assembled into a soft actuator [described by Hope and Tevon in this presentation](#).

MAC Address Tests

[Bluetooth Test Protocol](#) - Download an application to detect bluetooth technology which appears to have been included in Covid shots and possibly PCR Tests.

Managing Expectations

The only solution to recurring inoculation is to halt environmental deployment of the parasite.

Hydra-parasites are deployed to the public multiple vectors:

1. aerosol - chemtrails;
2. many medicines;
3. food and possibly water.

Unlike natural pathogens there is weak basis to believe the immune system will form antibodies that prevent future infection.

This protocol is designed to maximize parasite stress and elimination to inhibit accumulation of nano-tech within the body and unknown adverse effects.

It may be possible for the immune system to recognize larval and cyst forms as I have videoed what appear to be white blood cells actively responding to apparent spawn forms with a foreign-body response.

Case Studies (in progress)

Q/A

This document is action oriented targeting specific actions individuals can take to remediate their risks. This section addresses several questions relating to technical and starting point understand what is really going on. Click on the subject to expose the references.

References

Protocol

Research References